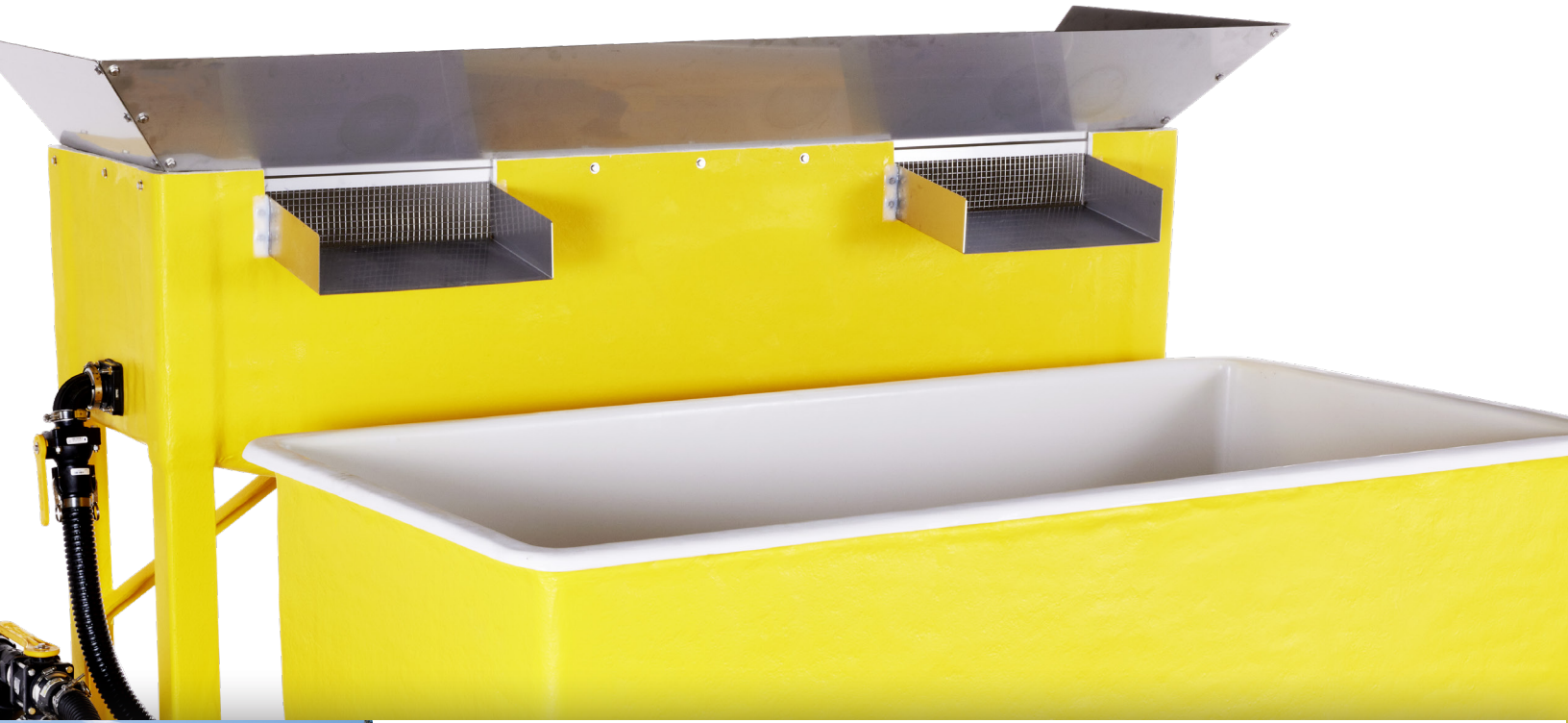


**ACCUBATCH**[®]
brine maker



**A SIMPLE WAY TO STAY SAFELY
AHEAD OF THE STORM.**



Cargill[®]

Protect lives and enhance commerce by providing sustainable road safety solutions.

START WITH THE BASICS – SIMPLE, ACCURATE AND COST-EFFECTIVE BRINE PRODUCTION.

As a highly effective and surprisingly economical solution for combating snow and ice issues on roadways, brine production has become a proven winter maintenance solution. With the release of the AccuBrine® automated brine maker, Cargill Deicing Technology introduced revolutionary technology to the brine making process – and we're ready to do it again with the AccuBatch® brine maker. The AccuBatch® brine maker provides everything you need to start up or recharge your anti-icing program and none of what you don't.

- **Consistently achieve ideal brine concentration via sensor that is only available with the AccuBatch® brine maker- no need to manually check.**
- **Simple plug & play design makes for easy setup and operation.**
- **Easy cleanout process that is quick and efficient.**

As your total solutions provider for all of your winter maintenance needs, we recognize the importance of presenting you with different options of brine making systems. Whether you are looking for the continuous flow design of our AccuBrine® automated brine maker or a smaller production capacity system like the AccuBatch® brine maker that allows you to make brine by the batch, we've got you covered.



BUDGET-FRIENDLY BRINE PRODUCTION.

The decision to purchase a brine making system can be a very overwhelming task. With so many options to choose from and numerous factors to consider, finding the right fit takes time. Although cost-effective, many entry-level models lack the key features desired to make your brine easily, accurately and without hassle - until now.

AccuBatch® brine maker features:

- **Automatic brine concentration measurement:** This user-friendly brine concentration measurement allows customers to set acceptable concentration ranges and alarms. The system will automatically shut off once target brine concentration is achieved.
- **Ease of cleanout:** Normally a very labor intensive and costly process, cleaning out your AccuBatch® brine maker is fast and easy. Save valuable time and money by keeping your employees focused on their priorities - not the machine.
- **Simple setup:** The simple plug and play design is a semi-automated do-it-yourself operational system. Just hook up the water and power and begin making brine without the setup costs or the need for technical assistance.
- **Production capacity:** The AccuBatch® brine maker is capable of producing up to 800 gallons of brine per batch. Make what you need when you need it.



DON'T SACRIFICE YOUR NEEDS FOR COST. GET IT ALL IN ONE.

It's true that cost can have a major effect on your decision to purchase a brine maker, but it's not the only factor. According to an independent study conducted in 2011 of state government and municipality transportation staff, the following are what many consider to be important features when purchasing a brine maker:

Why choose the AccuBatch® brine maker?	AccuBatch® brine maker
Lower Cost <i>Entry level model</i>	✓
Automatically measure brine concentration <i>No need to babysit brine production</i>	✓
Easy Cleanout <i>Quick, easy and efficient</i>	✓
Plug and Play Design <i>Simple setup, no technical assistance needed</i>	✓
Ease of Operation <i>Simple procedures and machine controls</i>	✓
Durable <i>High-end materials at entry-level price</i>	✓

The AccuBatch® brine maker addresses each of these features with a simple design that allows you to produce your desired amount of brine accurately and efficiently without the need for additional manpower. Its conductivity sensor for accurate concentration and easy cleanout process are offered at a budget-friendly price. Storage is not an issue either as it can be stored outside with no heated structure required. With the AccuBatch® brine maker, there is no need to decide which of these features you can do without.

System Includes:

- Simple controls (on/off/alarms)
- Stainless steel pump
- Durable valves
- Quick disconnect fittings
- Automatic brine concentration measurement



**Control stand pictured is an optional add-on and does not come standard with the machine.*



Protect lives and enhance commerce by providing sustainable road safety solutions.



Cargill Salt - Road Safety
24950 Country Club Blvd. Suite 450
North Olmsted, OH 44070
phone: 866-900-SALT (7258)

www.cargilldeicing.com
www.cargillsalt.com

©2024 Cargill, Incorporated. All rights reserved.

The information contained herein is believed to be true and accurate. However, all statements, recommendations or suggestions are made without guarantee, express or implied, on the part of Cargill. CARGILL DISCLAIMS ALL WARRANTIES, EXPRESS OR IMPLIED, INCLUDING BUT NOT LIMITED TO THE IMPLIED WARRANTIES OF MERCHANTABILITY, FITNESS FOR A PARTICULAR PURPOSE AND FREEDOM FROM INFRINGEMENT and disclaims all liability in connection with the installation and use of the product described herein. All such risks are assumed by the purchaser/user/installer. The information contained herein is not and should not be construed as a clearance or permission with respect to patent rights of Cargill or any third party and is subject to change without notice.