



Floraesters™ 15

Benefits of jojoba oil, sensory of an elegant, light ester



**DERIVED NATURAL
ACCORDING TO
ISO 16128¹**



**COSMOS
APPROVED²**



BIODEGRADABLE³



VEGAN SUITABLE⁴

CARGILL SUSTAINABILITY SCORE



Origin:

- INCI: Jojoba Esters
- Jojoba esters originate from jojoba (*Simmondsia chinensis*), a plant native to the Sonoran Desert

Sustainability:

- Supported by the Cargill Beauty Jojoba Promise™ Sustainability program, which was created to improve the sustainability of jojoba cultivation on a global scale through our business/purchases for the Personal Care industry by committing to 3 pillars:
 - Resilient farmers & communities
 - Sustainable water use
 - Traceability

Benefits & Functions:

- Exceptionally beneficial in color cosmetics and sun care applications, where high pigment and dry particle loading require dispersion ability
- Improves pigment wetting, stability and payout
- Imparts cushiony, smooth sensorial feel
- As compared to jojoba oil, Floraesters™15 is lighter, has more slip and spread, is less greasy, more resistant to oxidation, and has lower color and odor
- Increases skin hydration and skin smoothness

Uniqueness:

- Jojoba oil is nature's only botanical source of liquid wax esters and is very similar to the wax esters in sebum found on the skin and scalp⁵
- Floraesters™ can be blended to create unique textures, sensory appeal and various playtimes

Characteristics:

- Non-comedogenic
- High oxidative stability
- Low color and odor
- Non-GMO

Technical data:

- Color: clear to pale yellow
- Refractive index (40°C): 1.4664
- Typical OSI: ~95 hours
- Viscosity: 40
- Surface Tension: 33.57 mN/m



Discover more
about our
ingredients



Applications



Dose of use: 1-10%



Dose of use: 1-15%⁶



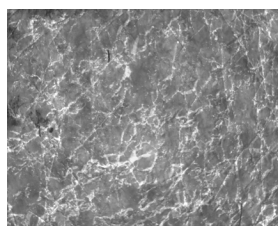
Dose of use: 1-15%



Dose of use: 1-10%

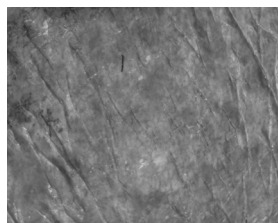
Floraesters™ 15

Floraesters™ 15 helps improve skin smoothness and reduce scaly appearance



Floraesters™ 15

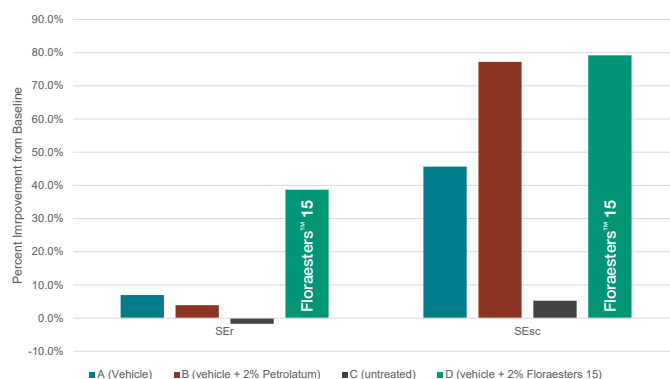
T0: left
T1: below



Skin scaliness (SEr) and smoothness (SEsc) (via Visioscan) were captured 1 hour after application of a lotion containing 2% Floraesters 15 (n=19).

SEr is a calculation for the complex parameter “roughness” - the bigger the SEr, the **less rough** (i.e. smoother) the skin.

SEsc is a calculation for “scaliness” - the smaller the SEsc, the less desquamation of the stratum corneum, the **less scaliness** on the skin.



Floraesters™ 15 performed statistically significantly ($p < 0.05$) better than the vehicle for SEr.

Floraesters™ 15 performed statistically significantly ($p < 0.05$) better than the vehicle for SEsc.

Product Details:

- CAS N° 61789-91-1
- EC N° 307-351-1
- Shelf Life: 3 years
- Packaging: 180kg drum (standard), 16kg pail (optional)

For more formulation tips and application examples:



Contact us at: beauty@cargill.com

¹ ISO 16128-1:2016 and ISO 16128-2:2017

² Cosmos standard v4, 2023

³ This product when tested was found to be inherently biodegradable according to OECD 302 B.

⁴ The responsibility of a vegan claim lies with the cosmetic manufacturer. Please consult your own legal or regulatory experts to ensure suitability of the product with your preferred standard.

⁵ <https://pubmed.ncbi.nlm.nih.gov/29465384/>

⁶ Cargill has not tested Floraesters 15 in final OTC drug formulations. Compliance with FDA regulations is the responsibility of the customer.

Disclaimer: This document is for your information and convenience only. All information, statements, recommendations and suggestions are believed to be true and accurate under local laws but are made without guarantee, express or implied. WE DISCLAIM, TO THE FULLEST EXTENT PERMITTED BY LAW, ALL WARRANTIES, EXPRESS OR IMPLIED, INCLUDING BUT NOT LIMITED TO WARRANTIES OF MERCHANTABILITY, FITNESS FOR A PARTICULAR PURPOSE and FREEDOM FROM INFRINGEMENT and disclaim all liability in connection with the storage, handling or use of our products or information, statements, recommendations and suggestions contained herein. All such risks are assumed by you/users. The labeling, substantiation and decision making relating to the regulatory approval status of the labeling on and claims for your products is your responsibility. We recommend you consult regulatory and legal advisors familiar with applicable laws, rules and regulations prior to making regulatory, labeling or claims decisions for your products. The information, statements, recommendations and suggestions contained herein are subject to change without notice.

REV APR24

Cargill.com

© 2024 Cargill, Incorporated. All rights reserved.

Cargill® Helping the world thrive